

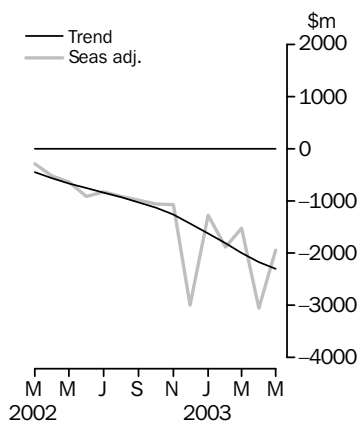


INTERNATIONAL TRADE IN GOODS AND SERVICES

AUSTRALIA

EMBARGO: 11.30AM (CANBERRA TIME) MON 30 JUN 2003

Balance on goods and services



KEY FIGURES

	Mar 2003	Apr 2003	May 2003	Apr 03 to May 03 %
	\$m	\$m	\$m	change
TREND				
Balance on goods & services	-1 998	-2 164	-2 292	-6
Credits (exports of goods & services)	12 075	11 772	11 503	-2
Debits (imports of goods & services)	14 073	13 936	13 795	-1
SEASONALLY ADJUSTED				
Balance on goods & services	-1 518	-3 049	-1 940	36
Credits (exports of goods & services)	12 260	11 198	11 438	2
Debits (imports of goods & services)	13 778	14 247	13 378	-6

KEY POINTS

TREND ESTIMATES

- The provisional trend estimate of the balance on goods and services was a deficit of \$2,292m in May, an increase of \$128m on the deficit in April.
- Goods and services credits fell \$269m to \$11,503m. Goods and services debits fell \$141m to \$13,795m.

SEASONALLY ADJUSTED ESTIMATES

- In seasonally adjusted terms, the balance on goods and services was a deficit of \$1,940m in May, a decrease of \$1,109m on the deficit in April. The decrease was due to an increase in credits and a larger fall in debits.
- Goods and services credits rose \$240m (2%) to \$11,438m. Rural goods fell \$68m (4%) while non-rural and other goods rose \$341m (5%). Services credits fell \$33m (1%).
- Goods and services debits fell \$869m (6%) to \$13,378m, with goods debits down \$805m (7%) and services debits down \$64m (2%).

ORIGINAL ESTIMATES

- In original terms, the May balance on goods and services was a deficit of \$1,793m, a decrease of \$870m on the deficit in April.
- Goods and services credits rose \$326m (3%), while goods and services debits fell \$544m (4%). Goods credits in the 11 months of the financial year to May were down \$4.2b on the corresponding period in 2001-02.

- For further information about these and related statistics, contact the National Information and Referral Service on 1300 135 070 or Tom Jebbink on Canberra 02 6252 5540.

NOTES

FORTHCOMING ISSUES

<i>ISSUE</i>	<i>RELEASE DATE</i>
June 2003	29 July 2003
July 2003	29 August 2003
August 2003	29 September 2003
September 2003	30 October 2003
October 2003	4 December 2003
November 2003	9 January 2004



CHANGES IN THIS ISSUE

Seasonal factors

Seasonally adjusted and trend estimates of the services debits and credits components of international trade in goods and services have been revised and the series are now seasonally adjusted at a more detailed level. New forward seasonal factors covering this change were released on 27 June 2003 and are available on request.

FEATURE ARTICLES

On 13 June 2003 a feature article on changes to the country and port classifications used for international merchandise trade data was released on the ABS web site <<http://www.abs.gov.au>> . These changes will be of interest to subscribers of detailed merchandise trade data. Select: Themes, then International Trade, then Topics of Interest.

CAUTIONARY NOTE

The tables in this publication are presented on two bases. Tables 1-6 contain estimates of Australia's international trade in goods and services which have been adjusted for coverage, valuation and timing to a balance of payments basis. Tables 7-10 contain estimates of merchandise exports and imports based on Australian Customs Service records. Paragraph 5 of the Explanatory Notes provides an explanation of the difference between these bases.

TABLES AVAILABLE ON AUSSTATS

Tables in this publication are available with longer time series on Ausstats. Merchandise exports and imports are available at the more detailed SITC 3 digit level. Alternative breakdowns of merchandise trade data, including quantity data for trade by selected commodity and trade by state with selected countries is available under table numbers 5432.0.65.001 (Exports) and 5439.0 (Imports).

R.W. Edwards
Acting Australian Statistician

CONTENTS

page

ANALYSIS

Analysis and comment	4
----------------------------	---

TABLES

INTERNATIONAL TRADE IN GOODS AND SERVICES – BALANCE OF PAYMENTS BASIS

1 Goods and services, summary, seasonally adjusted and trend	8
2 Goods and services, summary, original	9
3 Goods credits, original	10
4 Goods debits, original	11
5 Services, summary, original	12
6 Services, original, quarterly	13

INTERNATIONAL MERCHANDISE TRADE – RECORDED TRADE BASIS

7 International merchandise exports, by commodity	14
8 International merchandise imports, by commodity	17
9 International merchandise trade, by country and country groups	20
10 International merchandise trade, by state	21

OTHER TABLES

11 Period average exchange rates per Australian Dollar	22
---	----

OTHER INFORMATION

Explanatory notes	23
Appendix – Related articles	26

ANALYSIS AND COMMENTS

BALANCE ON GOODS AND SERVICES

The trend estimate of the balance on goods and services in May 2003 was a deficit of \$2,292m, an increase of \$128m on the deficit in April.

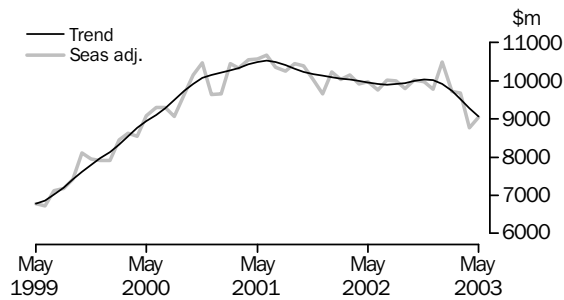
In seasonally adjusted terms, the balance on goods and services in May was a deficit of \$1,940m, a decrease of \$1,109m on the deficit in April.

EXPORTS OF GOODS AND SERVICES

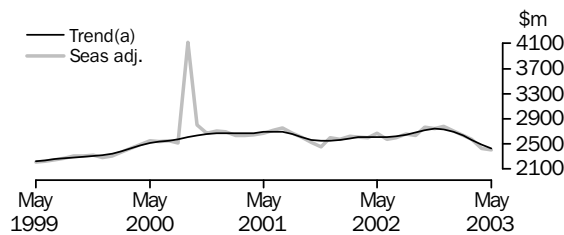
The trend estimate of goods and services credits fell \$269m in May to \$11,503m.

In seasonally adjusted terms, goods and services credits rose \$240m in May to \$11,438m. Rural goods fell \$68m (4%), while non-rural and other goods rose \$341m (5%). Services credits fell \$33m (1%), driven by a fall in travel services.

GOODS CREDITS



SERVICES CREDITS



(a) Trend estimates exclude the impact of the Olympics in September and October 2000

Rural goods

The trend estimate of rural goods fell \$44m (2%) to \$1,837m.

In seasonally adjusted terms, rural goods fell \$68m (4%) to \$1,791m.

Rural goods, in original terms, increased \$9m to \$1,853m. Rural goods in the 11 months to May were down \$4.1b on the corresponding period in 2001-02.

Contributing to the fall in the seasonally adjusted series were:

- wool and sheepskins, down \$67m (27%), in contrast to an average April to May rise over the previous three years of 8%. Exports of greasy wool fell \$55m (36%), with volumes down 24% and prices down 9%;
- other rural goods, up \$42m (5%), compared to an average April to May rise over the previous three years of 12%; and
- meat and meat preparations, down \$14m (3%), in contrast to an average April to May rise over the previous three years of 9%.

ANALYSIS AND COMMENTS *continued*

Rural goods continued

Offsetting these effects was a rise in the exports of cereal grains and cereal preparations, up \$48m (16%), in contrast to an average April to May fall over the previous three years of 2%. Exports of wheat rose \$87m (47%), with volumes up 50% and prices down 2%, while exports of other cereal grains fell.

Non-rural and other goods

The trend estimate of non-rural and other goods exports fell \$166m (2%) to \$7,233m.

Seasonally adjusted, non-rural and other goods rose \$341m (5%) to \$7,284m.

In original terms, non-rural goods rose \$350m (6%) to \$6,616m. Non-rural goods in the 11 months to May were down \$1.2b on the corresponding period in 2001-02.

Contributing to the rise in the seasonally adjusted series were:

- transport equipment, up \$177m (47%), compared to an average April to May rise over the previous three years of 8%. Other transport equipment increased \$111m, which included two passenger ferries, and road vehicles increased \$59m (22%);
- other mineral fuels, up \$56m (7%), compared to the average April to May rise over the previous three years of 1%. Exports of petroleum and petroleum products increased \$38m. Exports of gas also increased, up \$18m (7%); and
- other manufactures, up \$130m (12%), compared to an average April to May rise over the previous three years of 9%.

Partly offsetting these effects were:

- other non-rural, down \$73m (10%), in contrast to an average April to May rise over the previous three years of 8%;
- other goods, up \$119m (22%), compared to an average April to May rise over the previous three years of 39%; and
- machinery, up \$33m (6%), compared to the average April to May rise over the previous three years of 10%.

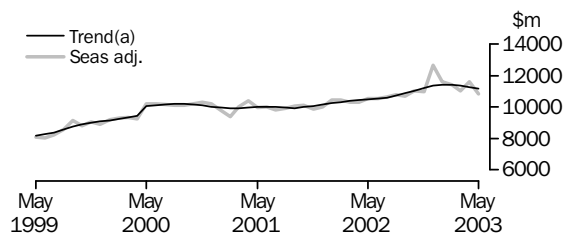
IMPORTS OF GOODS AND SERVICES

The trend estimate of goods and services debits fell \$141m to \$13,795m.

In seasonally adjusted terms, goods and services debits fell \$869m (6%) to \$13,378m.

Goods debits fell \$805m (7%) and services debits fell \$64m (2%).

GOODS DEBITS

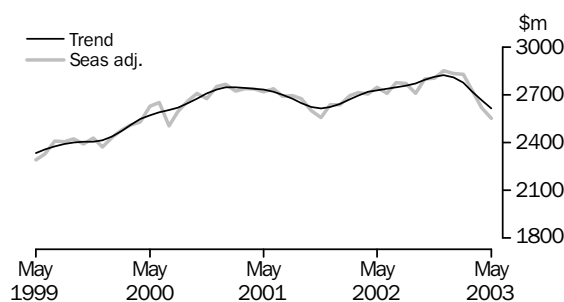


(a) A trend break of \$500m has been applied to May 2000. Trend estimates exclude abnormal imports of aircraft in December 2002.

ANALYSIS AND COMMENTS *continued*

IMPORTS OF GOODS AND SERVICES *continued*

SERVICES DEBITS



Consumption goods

The trend estimate of imports of consumption goods rose \$8m to \$3,478.

In seasonally adjusted terms, imports of consumption goods fell \$143m (4%) to \$3,517m.

Consumption goods, in original terms, fell \$178m (5%) to \$3,189m.

Contributing to the fall in the seasonally adjusted series were:

- non-industrial transport equipment, down \$63m (6%), in contrast to an average April to May rise over the previous three years of 9%, driven by a fall in imports of passenger motor vehicles;
- consumption goods n.e.s., down \$35m (4%), in contrast to an average April to May rise over the previous three years of 4%; and
- household electrical items, down \$27m (9%), in contrast to an average April to May rise over the previous three years of 5%.

Capital goods

The trend estimate of imports of capital goods rose \$1m to \$2,540m.

Seasonally adjusted, capital goods imports fell \$326m (12%) to \$2,379m.

Imports of capital goods, in original terms, fell \$120m (5%) to \$2,444m.

Contributing to the fall in the seasonally adjusted series were:

- civil aircraft, down \$140m (56%);
- industrial transport equipment n.e.s., down \$29m (8%), in contrast to an average April to May rise over the previous three years of 43%; and
- telecommunications equipment, up \$2m (1%), compared to an average April to May rise over the previous three years of 41%.

Intermediate and other goods

The trend estimate of imports of intermediate and other goods fell \$96m to \$5,160m.

Seasonally adjusted, intermediate and other goods imports fell \$336m (6%) to \$4,926m.

Imports of intermediate and other goods, in original terms, fell \$173m (3%) to \$4,980m.

Contributing to the fall in the seasonally adjusted series were:

- fuels and lubricants, down \$182m (20%), in contrast to an average April to May rise over the previous three years of 46%;
- processed industrial supplies n.e.s., down \$129m (11%), in contrast to an average April to May rise over the previous three years of 5%; and
- other merchandise goods, down \$88m (50%), compared to an average April to May fall over the previous three years of 8%.

ANALYSIS AND COMMENTS *continued*

*Intermediate and other
goods continued*

Offsetting these falls were rises in organic and inorganic chemicals, up \$74m (31%), compared to an average April to May rise over the previous three years of 4%; and iron and steel, up \$55m (39%), in contrast to an average April to May fall over the previous three years of 1%.

GOODS AND SERVICES(a), Summary: **Seasonally adjusted and trend**

Months	BALANCE	CREDITS					DEBITS					
	On goods and services	Total goods and services	Total goods	Rural goods(b)	Non-rural and other goods(b)	Total services	Total goods and services	Total goods	Con-sumption goods	Capital goods	Inter-mediate and other goods	Total services
	\$m	\$m	\$m	\$m	\$m	\$m	\$m	\$m	\$m	\$m	\$m	\$m
SEASONALLY ADJUSTED												
2002												
March	-284	12 761	10 156	2 407	7 749	2 605	-13 045	-10 330	-3 183	-2 223	-4 924	-2 715
April	-515	12 506	9 913	2 506	7 407	2 593	-13 021	-10 315	-3 257	-2 300	-4 758	-2 706
May	-627	12 650	9 983	2 542	7 441	2 667	-13 277	-10 530	-3 297	-2 527	-4 706	-2 747
June	-914	12 331	9 760	2 354	7 406	2 571	-13 245	-10 535	-3 295	-2 411	-4 829	-2 710
July	-827	12 601	10 007	2 331	7 676	2 594	-13 428	-10 649	-3 293	-2 581	-4 775	-2 779
August	-909	12 649	9 993	2 392	7 601	2 656	-13 558	-10 786	-3 340	-2 393	-5 053	-2 772
September	-983	12 435	9 796	2 253	7 543	2 639	-13 418	-10 704	-3 464	-2 409	-4 831	-2 714
October	-1 055	12 780	10 014	2 399	7 615	2 766	-13 835	-11 032	-3 359	-2 643	-5 030	-2 803
November	-1 069	12 722	9 983	2 316	7 667	2 739	-13 791	-10 985	-3 489	-2 421	-5 075	-2 806
December	-2 988	12 552	9 774	2 073	7 701	2 778	-15 540	-12 687	-3 480	-3 807	-5 400	-2 853
2003												
January	-1 276	13 191	10 481	2 017	8 464	2 710	-14 467	-11 631	-3 634	-2 135	-5 862	-2 836
February	-1 875	12 357	9 719	1 997	7 722	2 638	-14 232	-11 400	-3 392	-2 769	-5 239	-2 832
March	-1 518	12 260	9 684	2 033	7 651	2 576	-13 778	-11 045	-3 185	-2 492	-5 368	-2 733
April	-3 049	11 198	8 766	1 859	6 907	2 432	-14 247	-11 627	-3 660	-2 705	-5 262	-2 620
May	-1 940	11 438	9 039	1 791	7 248	2 399	-13 378	-10 822	-3 517	-2 379	-4 926	-2 556
TREND ESTIMATES												
2002												
March	-449	12 634	10 026	2 448	7 578	2 608	-13 083	-10 384	-3 224	-2 335	-4 825	-2 699
April	-556	12 605	9 992	2 450	7 542	2 613	-13 161	-10 441	-3 256	-2 371	-4 814	-2 720
May	-661	12 562	9 953	2 439	7 514	2 609	-13 223	-10 491	-3 281	-2 408	-4 802	-2 732
June	-748	12 532	9 922	2 418	7 504	2 610	-13 280	-10 540	-3 301	-2 439	-4 800	-2 740
July	-831	12 527	9 903	2 393	7 510	2 624	-13 358	-10 611	-3 322	-2 472	-4 817	-2 747
August	-919	12 557	9 907	2 366	7 541	2 650	-13 476	-10 718	-3 356	-2 492	-4 870	-2 758
September	-1 022	12 620	9 934	2 331	7 603	2 686	-13 642	-10 868	-3 402	-2 501	-4 965	-2 774
October	-1 122	12 710	9 989	2 286	7 703	2 721	-13 832	-11 035	-3 441	-2 501	-5 093	-2 797
November	-1 253	12 775	10 032	2 230	7 802	2 743	-14 028	-11 210	-3 465	-2 509	-5 236	-2 818
December	-1 424	12 750	10 016	2 159	7 857	2 734	-14 174	-11 346	-3 470	-2 523	-5 353	-2 828
2003												
January	-1 617	12 608	9 915	2 080	7 835	2 693	-14 225	-11 412	-3 465	-2 535	-5 412	-2 813
February	-1 812	12 369	9 739	2 007	7 732	2 630	-14 181	-11 405	-3 459	-2 541	-5 405	-2 776
March	-1 998	12 075	9 514	1 940	7 574	2 561	-14 073	-11 347	-3 460	-2 543	-5 344	-2 726
April	-2 164	11 772	9 280	1 881	7 399	2 492	-13 936	-11 265	-3 470	-2 539	-5 256	-2 671
May	-2 292	11 503	9 070	1 837	7 233	2 433	-13 795	-11 178	-3 478	-2 540	-5 160	-2 617

(a) For sign conventions, see paragraph 9 of the Explanatory Notes.

(b) For all time periods, estimates for sugar, sugar preparations and honey are included in Non-rural and other goods.

GOODS AND SERVICES(a), Summary: Original

	BALANCE	CREDITS					DEBITS					
		Total	Total	Rural	Non-rural	Total	Total	Total	Con-	Capital	Inter-	Total
	<i>On goods and services</i>	<i>goods and services</i>	<i>goods</i>	<i>goods (b)</i>	<i>and other goods (b)</i>	<i>services</i>	<i>goods and services</i>	<i>goods</i>	<i>sumption goods</i>	<i>goods</i>	<i>mediate and other goods</i>	<i>services</i>
\$m	\$m	\$m	\$m	\$m	\$m	\$m	\$m	\$m	\$m	\$m	\$m	
FINANCIAL YEAR												
1999-00	-14 289	126 034	97 665	23 617	74 048	28 369	-140 323	-110 610	-30 781	-26 695	-53 134	-29 713
2000-01	875	153 511	120 307	29 061	91 246	33 204	-152 636	-120 337	-35 775	-25 552	-59 010	-32 299
2001-02	-1 648	152 290	121 090	29 815	91 275	31 200	-153 938	-121 882	-37 422	-27 148	-57 312	-32 056
MONTHS												
2002												
March	754	13 027	10 491	2 553	7 938	2 536	-12 273	-9 709	-2 900	-2 080	-4 729	-2 564
April	-703	12 182	9 738	2 447	7 291	2 444	-12 885	-10 248	-3 172	-2 180	-4 896	-2 637
May	-983	12 435	10 081	2 639	7 442	2 354	-13 418	-10 776	-3 087	-2 779	-4 910	-2 642
June	-444	12 114	9 725	2 245	7 480	2 389	-12 558	-9 838	-2 902	-2 436	-4 500	-2 720
July	-1 086	13 141	10 205	2 266	7 939	2 936	-14 227	-11 283	-3 674	-2 777	-4 832	-2 944
August	-1 217	12 748	10 269	2 376	7 893	2 479	-13 965	-11 164	-3 602	-2 428	-5 134	-2 801
September	-1 677	12 255	9 906	2 167	7 739	2 349	-13 932	-10 989	-3 701	-2 484	-4 804	-2 943
October	-2 382	13 160	10 497	2 471	8 026	2 709	-15 542	-12 563	-3 994	-2 907	-5 662	-3 023
November	-1 397	12 679	10 033	2 377	7 656	2 677	-14 076	-11 383	-3 720	-2 436	-5 227	-2 744
December	-1 707	13 233	10 497	2 304	8 193	2 767	-14 940	-12 154	-3 321	-3 619	-5 214	-2 821
2003												
January	-1 857	12 023	9 016	1 808	7 208	3 057	-13 880	-10 952	-3 185	-2 083	-5 684	-2 921
February	-682	12 150	9 017	1 947	7 070	3 168	-12 832	-10 348	-3 166	-2 321	-4 861	-2 496
March	-1 071	12 406	9 894	2 106	7 788	2 512	-13 477	-10 880	-3 129	-2 425	-5 326	-2 607
April	-2 663	10 952	8 650	1 844	6 806	2 302	-13 615	-11 084	-3 367	-2 564	-5 153	-2 531
May	-1 793	11 278	9 128	1 853	7 275	2 150	-13 071	-10 613	-3 189	-2 444	-4 980	-2 458
FINANCIAL YEAR TO DATE												
11 months ended May												
2002	-1 204	140 176	111 365	27 570	83 795	28 811	-141 380	-112 044	-34 520	-24 712	-52 812	-29 336
2003	-17 532	136 025	107 112	23 519	83 593	29 106	-153 557	-123 413	-38 048	-28 488	-56 877	-30 289

(a) For sign conventions, see paragraph 9 of the Explanatory Notes.

(b) For all time periods, estimates for sugar, sugar preparations and honey are included in Non-rural and other goods.

							11 MONTHS ENDED MAY		Change %
	1999-00	2000-01	2001-02	Mar 2003	Apr 2003	May 2003	2002	2003	
	\$m	\$m	\$m	\$m	\$m	\$m	\$m	\$m	
Total goods credits	97 665	120 307	121 090	9 894	8 650	9 128	111 365	107 112	-3.8
Rural goods									
Meat and meat preparations	4 467	5 796	6 246	505	446	432	5 734	5 224	-8.9
Cereal grains and cereal preparations	4 941	5 834	6 211	325	299	347	5 803	3 956	-31.8
Wool and sheepskins	2 963	3 897	3 687	351	246	179	3 413	3 389	-0.7
Other rural	11 246	13 534	13 671	925	853	895	12 620	10 950	-13.2
<i>Total rural goods(a)</i>	<i>23 617</i>	<i>29 061</i>	<i>29 815</i>	<i>2 106</i>	<i>1 844</i>	<i>1 853</i>	<i>27 570</i>	<i>23 519</i>	<i>-14.7</i>
Non-rural goods									
Metal ores and minerals	11 760	15 205	14 774	1 257	1 152	1 173	13 514	13 196	-2.4
Coal, coke and briquettes	8 336	10 844	13 430	1 048	906	921	12 379	11 085	-10.5
Other mineral fuels	9 082	13 464	10 940	935	781	837	10 068	10 365	2.9
Metals (excl. gold)	8 810	10 146	9 650	746	644	635	8 952	8 022	-10.4
Machinery	7 133	8 797	7 999	671	580	613	7 377	6 769	-8.2
Transport equipment	4 597	5 041	5 686	484	375	552	5 129	5 844	13.9
Other manufactures	11 539	13 530	13 758	1 165	1 061	1 191	12 621	12 372	-2.0
Other non-rural(a)	5 236	6 809	7 419	759	767	694	6 750	7 981	18.2
<i>Total non-rural goods(a)</i>	<i>66 493</i>	<i>83 836</i>	<i>83 656</i>	<i>7 065</i>	<i>6 266</i>	<i>6 616</i>	<i>76 790</i>	<i>75 634</i>	<i>-1.5</i>
Other goods									
<i>Total other goods(b)</i>	<i>7 555</i>	<i>7 410</i>	<i>7 619</i>	<i>723</i>	<i>540</i>	<i>659</i>	<i>7 005</i>	<i>7 959</i>	<i>13.6</i>

(a) For all time periods, estimates for sugar, sugar preparations and honey are included in Other non-rural.

(b) Includes non-monetary gold.

GOODS DEBITS, Original(a)

	11 MONTHS ENDED								
	MAY								
	1999-00	2000-01	2001-02	Mar 2003	Apr 2003	May 2003	2002	2003	Change
	\$m	\$m	\$m	\$m	\$m	\$m	\$m	\$m	%
Total goods debits	-110 610	-120 337	-121 882	-10 880	-11 084	-10 613	-112 044	-123 413	10.1
Consumption goods									
Food and beverages, mainly for consumption	-3 943	-4 483	-4 687	-406	-420	-402	-4 370	-4 674	7.0
Household electrical items	-2 456	-3 000	-3 166	-266	-291	-264	-2 907	-3 378	16.2
Non-industrial transport equipment	-7 735	-9 627	-9 930	-840	-1 036	-973	-9 025	-10 318	14.3
Textiles, clothing and footwear	-4 232	-4 811	-4 849	-407	-418	-353	-4 531	-4 882	7.7
Toys, books and leisure goods	-3 238	-3 359	-3 494	-261	-240	-270	-3 209	-3 460	7.8
Consumption goods n.e.s.	-9 177	-10 495	-11 296	-949	-962	-927	-10 478	-11 336	8.2
<i>Total consumption goods</i>	<i>-30 781</i>	<i>-35 775</i>	<i>-37 422</i>	<i>-3 129</i>	<i>-3 367</i>	<i>-3 189</i>	<i>-34 520</i>	<i>-38 048</i>	<i>10.2</i>
Capital goods									
Machinery and industrial equipment	-8 912	-8 876	-9 502	-805	-841	-868	-8 783	-10 160	15.7
ADP equipment	-4 912	-5 260	-5 055	-435	-416	-421	-4 611	-4 382	-5.0
Telecommunications equipment	-4 150	-4 379	-3 643	-297	-346	-348	-3 310	-3 267	-1.3
Civil aircraft equipment	-1 414	-609	-1 513	-259	-252	-112	-1 187	-3 353	182.5
Industrial transport equipment n.e.s.	-3 981	-2 753	-3 553	-310	-374	-345	-3 259	-3 434	5.4
Capital goods n.e.s.	-3 326	-3 675	-3 882	-319	-335	-350	-3 562	-3 892	9.3
<i>Total capital goods</i>	<i>-26 695</i>	<i>-25 552</i>	<i>-27 148</i>	<i>-2 425</i>	<i>-2 564</i>	<i>-2 444</i>	<i>-24 712</i>	<i>-28 488</i>	<i>15.3</i>
Intermediate and other merchandise goods									
Food and beverages, mainly for industry	-731	-592	-577	-72	-82	-56	-530	-673	27.0
Primary industrial supplies n.e.s.	-1 117	-1 133	-1 117	-114	-94	-84	-1 032	-1 139	10.4
Fuels and lubricants	-7 450	-10 358	-8 823	-1 054	-927	-745	-8 152	-9 576	17.5
Parts for transport equipment	-6 874	-7 089	-6 827	-565	-585	-600	-6 274	-6 692	6.7
Parts for ADP equipment	-1 936	-2 255	-2 159	-182	-153	-168	-1 974	-1 856	-6.0
Other parts for capital goods	-8 008	-9 072	-8 216	-719	-685	-716	-7 550	-7 914	4.8
Organic and inorganic chemicals	-3 572	-3 777	-3 447	-250	-242	-316	-3 235	-2 816	-13.0
Paper and paperboard	-2 207	-2 311	-2 225	-193	-179	-182	-2 067	-2 159	4.5
Textile yarn and fabrics	-1 987	-1 863	-1 830	-139	-142	-153	-1 678	-1 696	1.1
Iron and steel	-1 509	-1 437	-1 765	-159	-141	-196	-1 624	-1 799	10.8
Plastics	-2 037	-2 193	-2 182	-209	-214	-204	-2 014	-2 305	14.4
Processed industrial supplies n.e.s.	-10 772	-11 252	-11 441	-1 119	-1 162	-1 033	-10 646	-11 393	7.0
Other merchandise goods	-873	-1 320	-1 563	-128	-177	-89	-1 381	-1 628	17.9
<i>Total intermediate and other merchandise goods</i>	<i>-49 073</i>	<i>-54 652</i>	<i>-52 172</i>	<i>-4 903</i>	<i>-4 783</i>	<i>-4 542</i>	<i>-48 157</i>	<i>-51 646</i>	<i>7.2</i>
Other goods									
<i>Total other goods(b)</i>	<i>-4 061</i>	<i>-4 358</i>	<i>-5 140</i>	<i>-423</i>	<i>-370</i>	<i>-438</i>	<i>-4 655</i>	<i>-5 231</i>	<i>12.4</i>

(a) For sign conventions, see paragraph 9 of the Explanatory Notes.

(b) Includes non-monetary gold.

SERVICES (a), Summary: **Original**

	11 MONTHS ENDED								
	MAY								
	1999-00	2000-01	2001-02	Mar 2003	Apr 2003	May 2003	2002	2003	Change
	\$m	\$m	\$m	\$m	\$m	\$m	\$m	\$m	%
Credits									
Freight	1 017	1 038	1 001	74	73	73	920	848	-7.8
Other transportation	5 848	7 024	6 664	559	488	488	6 142	6 144	—
Travel	13 139	15 366	14 775	1 146	959	803	13 741	13 573	-1.2
Other services	8 365	9 776	8 760	733	782	786	8 008	8 541	6.7
<i>Total services credits</i>	28 369	33 204	31 200	2 512	2 302	2 150	28 811	29 106	1.0
Debits(b)									
Freight	-5 257	-5 991	-5 626	-488	-517	-508	-5 224	-5 364	-2.7
Other transportation	-4 761	-5 361	-5 150	-399	-361	-355	-4 659	-4 784	-2.7
Travel	-9 836	-11 189	-10 934	-838	-773	-714	-10 003	-10 165	-1.6
Other services	-9 859	-9 758	-10 346	-882	-880	-881	-9 450	-9 976	-5.6
<i>Total services debits</i>	-29 713	-32 299	-32 056	-2 607	-2 531	-2 458	-29 336	-30 289	-3.2

— nil or rounded to zero (including null cells)

(a) For more detailed trade in services by commodity, see Table 6.

(b) For sign conventions, see paragraph 9 of the Explanatory Notes.

	CREDITS				DEBITS			
	<i>Jun Qtr</i>	<i>Sep Qtr</i>	<i>Dec Qtr</i>	<i>Mar Qtr</i>	<i>Jun Qtr</i>	<i>Sep Qtr</i>	<i>Dec Qtr</i>	<i>Mar Qtr</i>
	2002	2002	2002	2003	2002	2002	2002	2003
	\$m	\$m	\$m	\$m	\$m	\$m	\$m	\$m
Services	7 187	7 764	8 153	8 737	-7 999	-8 688	-8 588	-8 024
Transportation services								
Passenger	1 574	1 679	1 729	1 760	-1 138	-1 284	-1 083	-987
Freight	241	243	237	222	-1 342	-1 437	-1 482	-1 420
Other	np	np	np	np	-220	-254	-237	-223
<i>Total transportation services</i>	<i>1 815</i>	<i>1 922</i>	<i>1 966</i>	<i>1 982</i>	<i>-2 700</i>	<i>-2 975</i>	<i>-2 802</i>	<i>-2 630</i>
Travel services								
Business	289	270	271	283	-698	-701	-663	-747
Personal								
Education-related	714	1 156	554	1 846	-125	-204	-159	-176
Other	2 125	2 242	2 735	2 454	-1 853	-2 169	-2 027	-1 832
Total personal	2 839	3 398	3 289	4 300	-1 978	-2 373	-2 186	-2 008
<i>Total travel services</i>	<i>3 128</i>	<i>3 668</i>	<i>3 560</i>	<i>4 583</i>	<i>-2 676</i>	<i>-3 074</i>	<i>-2 849</i>	<i>-2 755</i>
Communications services	219	264	331	234	-301	-295	-452	-318
Construction services	35	22	25	18	—	—	—	—
Insurance services	166	169	169	169	-214	-214	-214	-214
Financial services	196	196	196	196	-139	-139	-139	-139
Computer and information services	255	259	299	253	-132	-133	-276	-183
Royalties and licence fees	138	115	190	148	-439	-476	-464	-440
Other business services								
Merchanting and other trade-related	134	96	152	103	-90	-113	-99	-96
Operational leasing	9	9	4	4	-207	-218	-249	-256
Miscellaneous business, professional and technical								
Legal, accounting, management consulting and public relations	158	176	171	126	-124	-70	-91	-106
Advertising, market research and public opinion polling	34	24	34	48	-57	-27	-40	-35
Research and development	66	79	78	58	-21	-38	-39	-27
Architecture, engineering and other technical services	134	133	190	132	-139	-213	-120	-100
Agriculture, mining and on-site processing	9	9	11	4	-38	-38	-38	-36
Services between affiliated enterprises n.i.e.	259	209	307	249	-209	-214	-259	-187
Other	48	78	118	84	-73	-88	-92	-106
Total miscellaneous business, professional and technical	708	708	909	701	-661	-688	-679	-597
<i>Total other business services</i>	<i>851</i>	<i>813</i>	<i>1 065</i>	<i>808</i>	<i>-958</i>	<i>-1 019</i>	<i>-1 027</i>	<i>-949</i>
Personal, cultural, and recreational services								
Audiovisual and related services	17	26	37	46	-215	-178	-155	-191
Other personal, cultural and recreational services	148	123	127	112	-35	-28	-42	-48
<i>Total personal, cultural, and recreational services</i>	<i>165</i>	<i>149</i>	<i>164</i>	<i>158</i>	<i>-250</i>	<i>-206</i>	<i>-197</i>	<i>-239</i>
Government services n.i.e.	219	187	188	188	-190	-157	-168	-157

np not available for publication but included in totals where applicable, unless otherwise indicated
— nil or rounded to zero (including null cells)

(a) For sign conventions, see paragraph 9 of the Explanatory Notes.
(b) For more information see paragraphs 13 and 14 of the Explanatory Notes.

				Percent of total merchandise exports(a)	11 MONTHS ENDED MAY		
	Mar	Apr	May		2002	2003	
	2003	2003	2003		\$m	\$m	
	\$m	\$m	\$m	%	\$m	\$m	
MAJOR COMMODITIES							
011	Meat of bovine animals, fresh, chilled or frozen	347	308	295	3.3	3 963	3 608
041	Wheat (incl. spelt) and meslin, unmilled	228	184	271	3.0	4 185	2 889
268	Wool and other animal hair (incl. wool tops)	330	227	157	1.7	3 146	3 159
281	Iron ore and concentrates	434	377	444	4.9	4 764	4 880
285	Aluminium ores and concentrates (incl. alumina)	337	265	319	3.5	3 734	3 316
321	Coal, not agglomerated	1 043	906	919	10.2	12 357	11 049
333	Petroleum oils and oils obtained from bituminous minerals, crude	454	471	383	4.2	5 512	5 545
334	Petroleum oils, oils from bituminous minerals (not crude); preparations, containing 70% or more by weight of these oils	244	108	230	2.5	2 141	2 322
343	Natural gas	235	199	194	2.1	2 408	2 387
684	Aluminium	398	310	320	3.5	4 075	3 769
781	Motor vehicles principally designed for transport of persons (excl. public-transport type, incl. racing cars)	251	155	222	2.5	2 699	2 600
971	Gold, non-monetary (excl. gold ores and concentrates)	501	387	407	4.5	4 683	4 976
SECTION AND DIVISION OF THE SITC							
0	Food and live animals						
00	Live animals other than fish, crustaceans, molluscs and aquatic invertebrates	67	85	80	0.9	1 023	1 096
01	Meat and meat preparations	505	445	425	4.7	5 736	5 218
02	Dairy products and birds' eggs	192	176	151	1.7	2 915	2 210
03	Fish (not marine mammals), crustaceans, molluscs and aquatic invertebrates, and preparations thereof(b)	101	105	104	1.2	1 524	1 383
04	Cereals and cereal preparations(b)	325	299	347	3.8	5 979	4 255
05	Vegetables and fruit	117	106	125	1.4	1 679	1 279
06	Sugars, sugar preparations and honey(b)	15	12	9	0.1	226	174
07	Coffee, tea, cocoa, spices, and manufactures thereof	24	20	18	0.2	245	277
08	Feeding stuff for animals (excl. unmilled cereals)(b)	74	68	67	0.7	909	809
09	Miscellaneous edible products and preparations	44	40	38	0.4	387	427
	<i>Total food and live animals(b)</i>	<i>1 465</i>	<i>1 356</i>	<i>1 365</i>	<i>15.1</i>	<i>20 623</i>	<i>17 126</i>
1	Beverages and tobacco						
11	Beverages	235	219	211	2.3	2 047	2 362
12	Tobacco and tobacco manufactures	15	9	4	—	68	115
	<i>Total beverages and tobacco</i>	<i>249</i>	<i>228</i>	<i>215</i>	<i>2.4</i>	<i>2 115</i>	<i>2 477</i>
2	Crude materials, inedible, except fuels						
21	Hides, skins and furskins, raw(b)	59	48	52	0.6	618	653
22	Oil seeds and oleaginous fruits	44	12	51	0.6	725	373
23	Crude rubber (incl. synthetic and reclaimed)	2	2	1	—	20	15
24	Cork and wood	74	93	73	0.8	801	904
25	Pulp and waste paper	6	5	4	—	54	47
26	Textile fibres and their wastes (not manufactured into yarn or fabric)(b)	413	284	239	2.6	4 602	4 261
27	Crude fertilisers (excl. those of Division 56) and crude minerals (excl. coal, petroleum and precious stones)	39	46	38	0.4	473	448
28	Metalliferous ores and metal scrap(b)	1 222	1 106	1 135	12.5	13 034	12 760
29	Crude animal and vegetable materials, n.e.s.(b)	23	17	20	0.2	280	254
	<i>Total crude materials, inedible, except fuels(b)</i>	<i>1 882</i>	<i>1 613</i>	<i>1 614</i>	<i>17.9</i>	<i>20 607</i>	<i>19 714</i>
3	Mineral fuels, lubricants and related materials						
32	Coal, coke and briquettes	1 048	906	921	10.2	12 377	11 084
33	Petroleum, petroleum products and related materials(b)	700	580	614	6.8	7 700	7 883
34	Gas, natural and manufactured	305	258	276	3.0	3 070	3 198
	<i>Total mineral fuels, lubricants and related materials(b)</i>	<i>2 053</i>	<i>1 744</i>	<i>1 811</i>	<i>20.0</i>	<i>23 147</i>	<i>22 165</i>

— nil or rounded to zero (including null cells)

(a) Percent of total merchandise exports is calculated for the most recent month.

(b) Excludes export commodities subject to a confidentiality restriction. These are included in Division 98.

					11 MONTHS ENDED MAY					
					Percent of total merchandise exports(a)	2002	2003			
					Mar 2003	Apr 2003	May 2003			
					\$m	\$m	\$m	%	\$m	\$m
SECTION AND DIVISION OF THE SITC <i>cont.</i>										
4	Animal and vegetable oils, fats and waxes									
41	Animal oils and fats	19	22	27	0.3	187	217			
42	Fixed vegetable fats and oils, crude, refined or fractionated(b)	1	5	2	—	42	45			
43	Fats and oils (processed), waxes and inedible mixtures or preparations, of animal or vegetable origin, n.e.s.	4	5	4	—	49	48			
	<i>Total animal and vegetable oils, fats and waxes(b)</i>	24	32	32	0.4	278	310			
5	Chemicals and related products, n.e.s.									
51	Organic chemicals(b)	20	15	17	0.2	132	142			
52	Inorganic chemicals(b)	53	31	65	0.7	486	518			
53	Dyeing, tanning and colouring materials	53	52	53	0.6	595	597			
54	Medicinal and pharmaceutical products(b)	168	194	187	2.1	2 091	1 807			
55	Essential oils and resinoids and perfume materials; toilet, polishing and cleansing preparations	39	33	38	0.4	393	433			
56	Fertilisers (excl. crude)	4	5	6	0.1	87	115			
57	Plastics in primary forms(b)	17	15	16	0.2	228	193			
58	Plastics in non-primary forms	21	26	18	0.2	228	231			
59	Chemical materials and products, n.e.s.	60	49	51	0.6	614	606			
	<i>Total chemicals and related products, n.e.s.(b)</i>	434	422	451	5.0	4 854	4 643			
6	Manufactured goods classified chiefly by material									
61	Leather, leather manufactures, and dressed furskins, n.e.s.	55	44	48	0.5	504	574			
62	Rubber manufactures, n.e.s.	12	11	11	0.1	146	122			
63	Cork and wood manufactures (excl. furniture)(b)	18	16	17	0.2	191	187			
64	Paper, paperboard, and articles of paper pulp, of paper or of paperboard	69	72	66	0.7	694	693			
65	Textile yarn, fabrics, made-up articles, n.e.s., and related products	46	41	40	0.4	493	454			
66	Non-metallic mineral manufactures, n.e.s.(b)	78	55	61	0.7	865	817			
67	Iron and steel(b)	69	70	83	0.9	751	718			
68	Non-ferrous metals(b)	677	573	548	6.1	8 197	7 296			
69	Manufactures of metals, n.e.s.	73	59	68	0.7	694	742			
	<i>Total manufactured goods classified chiefly by material(b)</i>	1 097	939	943	10.4	12 534	11 602			
7	Machinery and transport equipment									
71	Power generating machinery and equipment	53	55	50	0.5	643	590			
72	Machinery specialised for particular industries(b)	105	111	103	1.1	1 290	1 172			
73	Metal working machinery	13	10	11	0.1	185	119			
74	General industrial machinery and equipment, n.e.s. and machine parts, n.e.s.(b)	130	106	119	1.3	1 195	1 196			
75	Office machines and automatic data processing machines	130	104	115	1.3	1 530	1 366			
76	Telecommunications and sound recording and reproducing apparatus and equipment	81	61	68	0.7	1 020	744			
77	Electrical machinery, apparatus, appliances, parts (incl. non-elec. counterparts of electrical domestic equipment)	155	129	133	1.5	1 521	1 543			
78	Road vehicles (incl. air-cushion vehicles)	378	272	331	3.7	3 877	3 868			
79	Transport equipment (excl. road vehicles)	106	155	160	1.8	1 612	1 892			
	<i>Total machinery and transport equipment(b)</i>	1 150	1 003	1 089	12.0	12 874	12 490			

— nil or rounded to zero (including null cells)

(a) Percent of total merchandise exports is calculated for the most recent month.

(b) Excludes export commodities subject to a confidentiality restriction. These are included in Division 98.

INTERNATIONAL MERCHANDISE EXPORTS, By commodity *continued*

				Percent of total merchandise exports(a)	11 MONTHS ENDED MAY	
	Mar	Apr	May		2002	2003
	2003	2003	2003			
	\$m	\$m	\$m	%	\$m	\$m
SECTION AND DIVISION OF THE SITC <i>cont.</i>						
8	Miscellaneous manufactured articles					
81	Prefabricated buildings; sanitary, plumbing, heating and lighting fixtures and fittings, n.e.s.					
	8	8	9	0.1	98	110
82	Furniture, parts thereof; bedding, mattresses, mattress supports, cushions and similar stuffed furnishings					
	14	14	13	0.1	152	160
83	Travel goods, handbags and similar containers					
	2	1	2	—	14	16
84	Articles of apparel and clothing accessories					
	30	26	35	0.4	320	300
85	Footwear(b)					
	5	5	4	—	58	50
87	Professional, scientific and controlling instruments and apparatus, n.e.s.					
	105	102	118	1.3	1 232	1 141
88	Photographic apparatus, equipment and supplies and optical goods, n.e.s.; watches and clocks					
	58	45	50	0.6	877	618
89	Miscellaneous manufactured articles, n.e.s.					
	149	131	162	1.8	1 373	1 641
	<i>Total miscellaneous manufactured articles(b)</i>					
	370	333	392	4.3	4 124	4 034
9	Commodities and transactions not classified elsewhere in the SITC					
93	Special transactions and commodities not classified according to kind					
	213	143	257	2.8	2 086	2 764
95	Gold coin whether or not legal tender, and other coin being legal tender					
	6	6	4	—	62	77
96	Coin (excl. gold coin), not being legal tender					
	—	—	—	—	—	—
97	Gold, non-monetary (excl. gold ores and concentrates)					
	501	387	407	4.5	4 683	4 976
98	Combined confidential items excl some of SITC 280(c)(d)					
	415	463	461	5.1	3 316	4 288
	<i>Total commodities and transactions not classified elsewhere in the SITC(c)(d)</i>					
	1 135	1 000	1 128	12.5	10 147	12 106
Total Merchandise Exports						
	9 860	8 669	9 041	100.0	111 302	106 667
Balance of Payments Adjustments						
	34	-19	87	. .	63	445
Goods Credits (exports) on a Balance of Payments Basis						
	9 894	8 650	9 128	. .	111 365	107 112

— nil or rounded to zero (including null cells)

. . not applicable

(a) Percent of total merchandise exports is calculated for the most recent month.

(b) Excludes export commodities subject to a confidentiality restriction. These are included in Division 98.

(c) Includes exports commodities subject to a confidentiality restriction.

(d) Includes small value export entries which cannot yet be allocated by commodity.

INTERNATIONAL MERCHANDISE IMPORTS, By commodity

	Mar 2003	Apr 2003	May 2003	Percent of total merchandise trade(a)	11 MONTHS ENDED MAY		
						
					2002	2003	
	\$m	\$m	\$m	%	\$m	\$m	
MAJOR COMMODITIES							
333	Petroleum oils and oils obtained from bituminous minerals, crude	827	736	477	4.6	6 255	7 227
334	Petroleum oils, oils from bituminous minerals (not crude); preparations, cntg 70% or more by wt of these oils	216	183	262	2.5	1 694	2 186
542	Medicaments (incl. veterinary medicaments)	356	346	342	3.3	3 722	3 902
641	Paper and paperboard	177	160	165	1.6	1 726	1 926
752	Automatic data processing machines & units thereof, magnetic, optical readers; data transcribers & processors	432	406	418	4.0	4 586	4 348
759	Parts and accessories (excl. covers, cases and the like) for use with office & automatic data processing mach.	212	177	196	1.9	2 281	2 192
764	Telecommunications equipment, n.e.s.; parts, and accessories of radio, television, video & similar apparatus, n.e.s.	354	397	380	3.7	4 059	3 855
781	Motor vehicles principally designed for transport of persons (excl. public-transport type, incl. racing cars)	773	957	906	8.7	8 113	9 368
782	Motor vehicles for the transport of goods and special purpose motor vehicles	234	293	279	2.7	2 326	2 659
784	Parts, n.e.s. and accessories of the motor vehicles of Groups 722, 781, 782 and 783	193	201	198	1.9	2 050	2 125
792	Aircraft and associated equipment; spacecraft (incl. satellites and spacecraft launch vehicles; parts thereof)	359	342	113	1.1	2 657	4 760
971	Gold, non-monetary (excl. gold ores and concentrates)	204	157	232	2.2	1 975	2 771
SECTION AND DIVISION OF THE SITC							
0	Food and live animals						
00	Live animals other than fish, crustaceans, molluscs and aquatic invertebrates	3	14	4	—	64	89
01	Meat and meat preparations	23	23	18	0.2	216	183
02	Dairy products and birds' eggs	34	33	26	0.2	286	295
03	Fish (not marine mammals), crustaceans, molluscs and aquatic invertebrates, and preparations thereof	83	83	74	0.7	828	878
04	Cereals and cereal preparations	34	44	25	0.2	271	358
05	Vegetables and fruit	70	73	72	0.7	758	850
06	Sugars, sugar preparations and honey	16	21	17	0.2	126	168
07	Coffee, tea, cocoa, spices, and manufactures thereof	57	60	53	0.5	579	645
08	Feeding stuff for animals (excl. unmilled cereals)	36	46	15	0.1	250	312
09	Miscellaneous edible products and preparations	74	76	89	0.9	905	928
	<i>Total food and live animals</i>	430	472	394	3.8	4 284	4 705
1	Beverages and tobacco						
11	Beverages	52	51	51	0.5	626	681
12	Tobacco and tobacco manufactures	28	29	25	0.2	180	313
	<i>Total beverages and tobacco</i>	80	80	75	0.7	806	995
2	Crude materials, inedible, except fuels						
21	Hides, skins and furskins, raw	1	—	—	—	5	2
22	Oil seeds and oleaginous fruits	7	2	9	0.1	23	59
23	Crude rubber (incl. synthetic and reclaimed)(b)	13	13	12	0.1	111	125
24	Cork and wood	53	47	49	0.5	470	546
25	Pulp and waste paper	21	16	21	0.2	218	242
26	Textile fibres and their wastes (not manufactured into yarn or fabric)	14	16	15	0.1	143	157
27	Crude fertilisers (excl. those of Division 56) and crude minerals (excl. coal, petroleum and precious stones)	15	15	16	0.2	184	182
28	Metalliferous ores and metal scrap	21	18	21	0.2	226	229
29	Crude animal and vegetable materials, n.e.s.	27	25	21	0.2	251	273
	<i>Total crude materials, inedible, except fuels</i>	171	153	164	1.6	1 632	1 815

— nil or rounded to zero (including null cells)

(b) Excludes imports commodities subject to a confidentiality restriction. These are included in Division 98.

(a) Percent of total merchandise trade is calculated for the most recent month.

				Percent of total merchandise trade(a)	11 MONTHS ENDED MAY		
	Mar	Apr	May		2002	2003	
	2003	2003	2003				
	\$m	\$m	\$m	%	\$m	\$m	
SECTION AND DIVISION OF THE SITC <i>cont.</i>							
3	Mineral fuels, lubricants and related materials						
32	Coal, coke and briquettes	3	1	1	—	16	18
33	Petroleum, petroleum products and related materials(b)	1 051	949	749	7.2	8 211	9 670
34	Gas, natural and manufactured	1	1	1	—	119	78
	<i>Total mineral fuels, lubricants and related materials(b)</i>	<i>1 055</i>	<i>952</i>	<i>750</i>	<i>7.2</i>	<i>8 346</i>	<i>9 766</i>
4	Animal and vegetable oils, fats and waxes						
41	Animal oils and fats	1	1	2	—	15	19
42	Fixed vegetable fats and oils, crude, refined or fractionated	25	33	25	0.2	221	283
43	Fats and oils (processed), waxes and inedible mixtures or preparations, of animal or vegetable origin, n.e.s.	4	3	3	—	32	37
	<i>Total animal and vegetable oils, fats and waxes</i>	<i>30</i>	<i>37</i>	<i>30</i>	<i>0.3</i>	<i>269</i>	<i>340</i>
5	Chemicals and related products, n.e.s.						
51	Organic chemicals	188	178	270	2.6	2 347	2 223
52	Inorganic chemicals(b)	61	64	48	0.5	889	594
53	Dyeing, tanning and colouring materials	48	49	44	0.4	504	523
54	Medicinal and pharmaceutical products	460	495	443	4.3	4 674	4 882
55	Essential oils and resinoids and perfume materials; toilet, polishing and cleansing preparations	109	106	96	0.9	1 075	1 200
56	Fertilisers (excl. crude)	137	117	91	0.9	752	741
57	Plastics in primary forms	121	131	116	1.1	1 095	1 310
58	Plastics in non-primary forms	88	83	88	0.8	917	996
59	Chemical materials and products, n.e.s.(b)	133	127	136	1.3	1 385	1 415
	<i>Total chemicals and related products, n.e.s.(b)</i>	<i>1 345</i>	<i>1 350</i>	<i>1 331</i>	<i>12.8</i>	<i>13 638</i>	<i>13 884</i>
6	Manufactured goods classified chiefly by material						
61	Leather, leather manufactures, and dressed furskins, nes	15	14	15	0.1	192	181
62	Rubber manufactures, n.e.s.(b)	143	144	153	1.5	1 474	1 608
63	Cork and wood manufactures (excl. furniture)	61	53	54	0.5	557	639
64	Paper, paperboard, and articles of paper pulp, of paper or of paperboard(b)	207	192	197	1.9	2 195	2 318
65	Textile yarn, fabrics, made-up articles, n.e.s., and related products	205	217	226	2.2	2 352	2 515
66	Non-metallic mineral manufactures, n.e.s.	193	166	162	1.6	1 818	1 952
67	Iron and steel(b)	159	141	197	1.9	1 623	1 800
68	Non-ferrous metals(b)	108	102	86	0.8	891	958
69	Manufactures of metals, nes(b)	256	248	255	2.5	2 579	2 909
	<i>Total manufactured goods classified chiefly by material(b)</i>	<i>1 347</i>	<i>1 278</i>	<i>1 345</i>	<i>12.9</i>	<i>13 680</i>	<i>14 879</i>
7	Machinery and transport equipment						
71	Power generating machinery and equipment	220	225	254	2.4	2 824	2 976
72	Machinery specialised for particular industries	331	360	336	3.2	3 705	4 188
73	Metal working machinery	69	99	95	0.9	492	785
74	General industrial machinery and equipment, n.e.s. and machine parts, n.e.s.	522	513	565	5.4	5 784	6 538
75	Office machines and automatic data processing machines	671	618	655	6.3	7 273	6 989
76	Telecommunications and sound recording and reproducing apparatus and equipment	526	600	575	5.5	6 206	6 386
77	Electrical machinery, apparatus, appliances, parts (incl. non-elec. counterparts of electrical domestic equip)(b)	596	582	565	5.4	6 089	6 395
78	Road vehicles (incl. air-cushion vehicles)	1 300	1 562	1 489	14.3	13 584	15 388
79	Transport equipment (excl. road vehicles)	401	396	142	1.4	3 013	5 696
	<i>Total machinery and transport equipment(b)</i>	<i>4 638</i>	<i>4 955</i>	<i>4 676</i>	<i>45.0</i>	<i>48 971</i>	<i>55 340</i>

— nil or rounded to zero (including null cells)

(a) Percent of total merchandise trade is calculated for the most recent month.

(b) Excludes imports commodities subject to a confidentiality restriction. These are included in Division 98.

INTERNATIONAL MERCHANDISE IMPORTS, By commodity *continued*

				Percent of total merchandise trade(a)	11 MONTHS ENDED MAY		
	Mar	Apr	May			
	2003	2003	2003		2002	2003	
	\$m	\$m	\$m	%	\$m	\$m	
SECTION AND DIVISION OF THE SITC <i>cont.</i>							
8	Miscellaneous manufactured articles						
81	Prefabricated buildings; sanitary, plumbing, heating and lighting fixtures and fittings, n.e.s.	34	39	34	0.3	360	414
82	Furniture, parts thereof; bedding, mattresses, mattress supports, cushions and similar stuffed furnishings	95	112	113	1.1	1 098	1 378
83	Travel goods, handbags and similar containers	32	34	29	0.3	435	451
84	Articles of apparel and clothing accessories	270	289	232	2.2	3 012	3 183
85	Footwear	78	62	54	0.5	915	955
87	Professional, scientific and controlling instruments and apparatus, n.e.s.	260	256	265	2.5	2 759	2 791
88	Photographic apparatus, equipment and supplies and optical goods, n.e.s.; watches and clocks(b)	122	117	96	0.9	1 452	1 407
89	Miscellaneous manufactured articles, n.e.s.	548	590	544	5.2	6 106	6 781
	<i>Total miscellaneous manufactured articles(b)</i>	<i>1 440</i>	<i>1 499</i>	<i>1 368</i>	<i>13.2</i>	<i>16 138</i>	<i>17 362</i>
9	Commodities and transactions not classified elsewhere in the SITC						
93	Special transactions and commodities not classified according to kind	2	3	2	—	41	32
95	Gold coin whether or not legal tender, and other coin being legal tender	—	—	—	—	11	4
96	Coin (excl. gold coin), not being legal tender	—	—	—	—	1	1
97	Gold, non-monetary (excl. gold ores and concentrates)	204	157	232	2.2	1 975	2 771
98	Combined confidential items excl some of SITC 280 (exports only) and some of SITCs 510 and 520 (imports only)(c)	34	24	31	0.3	240	559
	<i>Total commodities and transactions not classified elsewhere in the SITC(c)</i>	<i>241</i>	<i>184</i>	<i>265</i>	<i>2.6</i>	<i>2 268</i>	<i>3 366</i>
	Total Merchandise Imports	10 776	10 959	10 397	100.0	110 031	122 452
	Balance of Payments Adjustments	104	125	216	. .	2 013	961
	Goods Debits (imports) on a Balance of Payments Basis	10 880	11 084	10 613	. .	112 044	123 413

— nil or rounded to zero (including null cells)

. . not applicable

(a) Percent of total merchandise trade is calculated for the most recent month.

(b) Excludes imports commodities subject to a confidentiality restriction. These are included in Division 98.

(c) Includes imports commodities subject to a confidentiality restriction.

INTERNATIONAL MERCHANDISE TRADE, By country and country groups(a)

Country	EXPORTS				IMPORTS				BALANCE OF MERCHANDISE TRADE	
	2001-02	May 2003	11 months ended	11 months ended	2001-02	May 2003	11 months ended	11 months ended	2001-02	2003
			May 2002	May 2003			May 2002	May 2003		
	\$m	\$m	\$m	\$m	\$m	\$m	\$m	\$m	\$m	\$m
Belgium-Luxembourg	862	48	781	796	876	103	811	1 047	-14	-251
Brazil	457	37	429	364	470	37	442	455	-13	-91
Canada	1 900	126	1 775	1 650	1 607	160	1 485	1 595	293	55
China	7 816	702	7 210	8 085	11 275	1 053	10 381	12 759	-3 458	-4 674
Denmark	108	9	98	113	671	61	618	708	-563	-595
Egypt(b)	754	19	691	361	20	1	19	19	734	342
Fiji	529	40	473	506	232	18	217	207	297	299
Finland	392	49	357	398	727	62	677	631	-335	-233
France	1 343	61	1 238	1 095	2 691	234	2 488	3 547	-1 348	-2 452
Germany	1 349	132	1 223	1 479	6 729	735	6 219	7 318	-5 380	-5 839
Hong Kong (Sar of China)	3 996	205	3 687	2 994	1 410	85	1 302	1 103	2 586	1 891
India	2 524	299	2 355	2 295	874	71	810	906	1 650	1 388
Indonesia	3 194	216	2 948	2 694	4 010	336	3 683	4 307	-817	-1 613
Iran	785	65	757	399	39	2	25	37	746	362
Iraq	840	68	782	350	—	—	—	37	840	314
Ireland	307	15	294	170	1 469	155	1 383	1 490	-1 163	-1 320
Israel	291	11	261	189	525	33	498	450	-235	-261
Italy	2 165	147	2 031	1 734	3 410	331	3 149	3 839	-1 246	-2 106
Japan	22 796	1 632	21 002	20 136	15 463	1 298	14 095	14 910	7 333	5 226
Korea, Republic of	9 818	600	9 010	8 469	4 722	358	4 296	4 406	5 096	4 063
Kuwait	518	43	485	480	133	—	106	166	385	315
Malaysia	2 519	192	2 339	1 975	3 857	346	3 589	3 918	-1 338	-1 943
Mexico	478	43	441	383	521	61	484	520	-42	-137
Netherlands	1 522	99	1 440	1 253	1 094	107	1 003	1 180	428	73
New Zealand	7 669	704	7 018	7 423	4 740	415	4 405	4 641	2 929	2 782
Pakistan	477	22	453	257	200	14	175	180	277	77
Papua New Guinea	1 013	76	915	872	1 124	127	987	1 360	-111	-488
Philippines	1 252	79	1 146	972	623	53	567	756	629	216
Saudi Arabia	2 598	169	2 372	1 878	1 026	132	1 002	1 213	1 572	665
Singapore	4 936	298	4 616	4 378	3 972	378	3 665	4 052	963	326
South Africa	1 341	114	1 220	1 219	870	87	803	960	471	259
Spain	792	105	725	612	761	97	708	967	31	-356
Sweden	220	30	201	189	1 625	177	1 482	1 671	-1 405	-1 482
Switzerland	227	21	208	364	1 302	106	1 208	1 139	-1 075	-774
Taiwan	4 828	292	4 431	4 018	3 132	277	2 877	3 109	1 697	910
Thailand	2 291	141	2 064	2 253	2 886	265	2 673	3 194	-595	-941
Turkey	317	45	276	282	186	18	174	205	132	77
United Arab Emirates	1 245	87	1 171	1 170	749	67	682	637	496	533
United Kingdom	5 199	630	4 654	6 488	6 219	464	5 818	5 333	-1 020	1 155
United States of America	12 008	742	10 946	9 605	21 488	1 586	19 648	20 455	-9 480	-10 849
Viet Nam	497	33	452	438	1 855	118	1 668	2 334	-1 358	-1 896
Other Countries(c)	6 935	593	6 327	5 879	4 065	369	3 712	4 692	2 871	1 187
Total trade	121 108	9 041	111 302	106 667	119 649	10 397	110 031	122 452	1 460	-15 785
APEC	87 452	6 118	80 403	76 710	83 816	7 006	76 855	84 695	3 636	-7 986
ASEAN	14 807	967	13 675	12 802	17 634	1 543	16 257	19 227	-2 827	-6 425
Developing Countries	57 330	4 024	52 778	49 047	44 930	3 921	41 362	47 345	12 401	1 702
European Union	14 486	1 336	13 260	14 464	27 122	2 624	25 129	29 042	-12 636	-14 578
OECD	69 882	5 284	64 107	62 977	78 154	6 702	71 842	77 845	-8 273	-14 868

— nil or rounded to zero (including null cells)

(c) Includes small value export entries which cannot yet be allocated by country.

(a) See AusStats for details of all countries.

(b) Exports of Alumina to Egypt are excluded from its country total and included in the 'Other Countries' category.

	11 MONTHS ENDED MAY			
	2001-02	May 2003	2002	2003
	\$m	\$m	\$m	\$m
.....				
EXPORTS (a)				
New South Wales	22 920	1 553	21 180	18 724
Victoria	22 242	1 434	20 540	17 532
Queensland	23 151	1 664	21 301	19 634
South Australia	9 103	655	8 307	7 780
Western Australia	30 222	2 572	27 664	29 654
Tasmania	2 388	232	2 192	2 293
Northern Territory	2 948	164	2 677	2 449
Australian Capital Territory	11	—	10	4
State not available for publication(b)(c)	529	110	494	482
Re-exports	7 593	657	6 936	8 116
Total exports	121 108	9 041	111 302	106 667
.....				
IMPORTS				
New South Wales	51 902	4 379	47 741	50 706
Victoria	37 558	3 135	34 515	38 778
Queensland	14 218	1 285	13 069	14 906
South Australia	5 347	498	4 954	5 334
Western Australia	9 320	1 015	8 553	10 900
Tasmania	518	38	485	735
Northern Territory	780	46	709	878
Australian Capital Territory	5	—	5	216
Total imports	119 649	10 397	110 031	122 452

— nil or rounded to zero (including null cells)

- (a) State in which the final stage of production or manufacture occurs.
- (b) Includes exports which cannot yet be allocated by state. These shipments will be appropriately classified as more details become available.
- (c) Exports of Alumina to Bahrain, Egypt and Iceland are excluded from the state totals and included in 'State not available for publication' category.

PERIOD AVERAGE EXCHANGE RATES, Per Australian Dollar(a)

<i>Period</i>	<i>United States dollar</i>	<i>United Kingdom pound</i>	<i>Euro</i>	<i>Japanese yen</i>	<i>Trade-weighted index of value of the \$A(b)</i>
FINANCIAL YEAR					
1999-00	0.6292	0.3947	0.6277	67.91	55.2
2000-01	0.5379	0.3704	0.6023	61.49	50.3
2001-02	0.5239	0.3632	0.5850	66.10	50.7
MONTHS					
2002					
March	0.5243	0.3685	0.5982	68.74	51.4
April	0.5354	0.3713	0.6047	70.06	52.3
May	0.5497	0.3765	0.6000	69.55	52.6
June	0.5694	0.3839	0.5962	70.29	53.4
July	0.5544	0.3564	0.5580	65.43	51.2
August	0.5422	0.3527	0.5543	64.48	50.5
September	0.5470	0.3517	0.5578	66.01	51.1
October	0.5498	0.3530	0.5601	68.09	51.7
November	0.5611	0.3570	0.5604	68.19	52.2
December	0.5627	0.3555	0.5535	68.81	52.1
2003					
January	0.5825	0.3605	0.5490	69.21	52.9
February	0.5947	0.3691	0.5520	71.00	53.9
March	0.6023	0.3804	0.5577	71.43	54.6
April	0.6090	0.3869	0.5610	72.92	55.3
May	0.6470	0.3989	0.5601	75.91	57.4

- (a) These exchange rates and the trade-weighted index are derived using rates provided by the Reserve Bank of Australia in respect of each trading day.
- (b) May 1970=100. The trade-weighted index is reweighted annually (on 1 October) and on special occasions if required.

EXPLANATORY NOTES

INTRODUCTION

1 This publication presents preliminary estimates of Australia's international trade in goods and services on a balance of payments basis and merchandise import and export statistics on a recorded trade basis.

2 Merchandise trade statistics on a recorded trade basis are compiled from information submitted by exporters and importers or their agents to the Australian Customs Service (ACS). Adjustments for coverage, timing and valuation are made to recorded trade data to convert them to a balance of payments basis. The main source for services data is the quarterly Survey of International Trade in Services.

3 More comprehensive quarterly estimates of Australia's trade in goods and services, together with comprehensive details of Australia's balance of payments are included in the quarterly publication, *Balance of Payments and International Investment Position, Australia* (cat. no. 5302.0). Detailed monthly statistics on merchandise trade are available on Ausstats or by subscription to tailored services.

CONCEPTS, SOURCES AND METHODS

4 The conceptual framework used in compiling Australia's merchandise trade statistics can be found in *International Merchandise Trade, Australia: Concepts, Sources and Methods, 2001* (cat. no. 5489.0).

5 The conceptual framework used in compiling Australia's balance of payments statistics is based on the Fifth Edition of the International Monetary Fund's *Balance of Payments Manual* (BPM5, 1993). Descriptions of the underlying concepts and structure of the balance of payments and the sources, methods and terms used in compiling the estimates are presented in *Balance of Payments and International Investment Position, Australia: Concepts, Sources and Methods, 1998* (cat. no. 5331.0). To bring merchandise trade statistics on a recorded trade basis to a balance of payment basis, timing adjustments are made to ensure that the transaction is recorded in the period in which ownership changed, rather than in the period in which the transaction was recorded by ACS. Adjustments are also made to imports to take account of distortions which arise when significant changes occur in the volume of import entries lodged but not yet processed by ACS in a given month. Chapter 6 of cat. no. 5331.0 provides more detail on the relationship between statistics on international merchandise trade on a recorded trade basis and on a balance of payments basis.

6 Both of the Concepts, Sources and Methods publications are available for free from the ABS web site, see <<http://www.abs.gov.au>> -select *About Statistics* then *Concepts & Classifications*.

SEASONAL ADJUSTMENT

7 Monthly original estimates are volatile, being subject to calendar-related and large irregular influences. Seasonally adjusted estimates are derived by estimating and removing systematic calendar related effects, such as seasonal and trading day influences, from the original series. Seasonal adjustment does not aim to remove the irregular or non-seasonal influences which may be present in any particular month. These irregular influences may reflect both random economic events and difficulties of statistical recording. The international trade in goods and services on a balance of payments basis estimates are seasonally adjusted. The merchandise exports and imports statistics on a recorded trade basis are not.

TREND ESTIMATES

8 The month-to-month movements of the seasonally adjusted estimates may not be reliable indicators of trend behaviour because they include irregular or non-seasonal movements. Trend estimates are derived by applying a 13-term Henderson moving average to the seasonally adjusted series. The use of a 13-term Henderson average can result in revisions to the estimates for the most recent six months as additional observations become available. Revisions can also occur because of changes in the original data and as a result of the annual re-estimation of the seasonal factors.

EXPLANATORY NOTES *continued*

SIGN CONVENTION

9 In keeping with balance of payments conventions, where statistics are on a balance of payments basis, credit entries (exports) are shown without sign and debit items (imports) are shown as negative entries. For statistics on a recorded trade basis, both imports and exports are shown without sign. References to balance of payments debit items in Key Figures, Key Points, and Analysis and Comments are also made without regard to sign.

COMMODITY BREAKDOWNS OF GOODS

10 For details of the classification used for goods exports on a balance of payments basis (credits), see table 6.6 in *Balance of Payments and International Investment Position, Australia: Concepts, Sources and Methods, 1998* (cat. no. 5331.0).

11 Details of the classification of goods imports on a balance of payments basis (debits) are provided in table 6.7 in cat. no. 5331.0. Most of the commodity groups shown in table 4 for goods debits are available for more detailed sub-groups from Ausstats.

12 The recorded trade statistics shown in tables 7 and 8 are classified by the Standard International Trade Classification 2 (SITC). The first section of tables 7 and 8 show the most significant commodities (by value) at the SITC 3 digit level.

COMMODITY BREAKDOWNS OF SERVICES

13 The quarterly detailed services data published in Table 6 are consistent with the monthly aggregates shown in Table 5. Services trade data by major partner countries and by Australian state of production/consumption are published on a financial year basis and a calendar year basis.

14 Monthly indicators for many of the services components that are only surveyed quarterly are not available. In particular, the Freight and Other transportation components of Total services credits are not available for publication on a monthly basis. The estimates for these items shown in table 5 are therefore derived by dividing the quarterly estimate by three.

RELATED PRODUCTS OR SERVICES

15 More detailed balance of payments and recorded merchandise trade data, including forward seasonal factors, are available from Ausstats. Very detailed merchandise trade data by commodity, country and state are available by contacting the National Information and Referral Service, as shown on the back of this publication.

16 Users may also wish to refer to the following publications which are available from ABS Bookshops and on the ABS web site:

- *Balance of Payments and International Investment Position, Australia* (cat. no. 5302.0) - issued quarterly
- *International Merchandise Imports, Australia* (cat. no. 5439.0) - issued monthly
- *International Trade Price Indexes, Australia* (cat. no. 6457.0) - issued quarterly
- *Balance of Payments and International Investment Position, Australia: Concepts, Sources and Methods* (cat. no. 5331.0)
- *Information Paper: Quality of Australian Balance of Payments Statistics* (cat. no. 5342.0)
- *International Merchandise Trade, Australia: Concepts, Sources and Methods* (cat. no. 5489.0)
- *A Guide to Australian Balance of Payments and International Investment Position Statistics* (cat. no. 5362.0.55.001).

17 The last four publications are available for free on the ABS web site <<http://www.abs.gov.au>> - select About Statistics then Concepts & Classifications.

ABBREVIATIONS

ABS	Australian Bureau of Statistics
ACS	Australian Customs Service
APEC	Asia Pacific Economic Co-operation

EXPLANATORY NOTES *continued*

ASEAN	Association of South-East Asian Nations
n.e.s.	not elsewhere specified
n.i.e.	not included elsewhere
OECD	Organisation for Economic Co-operation and Development
SAR	Special Administrative Region
SITC	Standard International Trade Classification

APPENDIX RELATED ARTICLES

<i>Article</i>	<i>Source</i>	<i>Issue</i>
Investment		
Foreign ownership of equity	5302.0	Sep qtr 2002
Measuring Australia's foreign currency exposure	5302.0	Dec qtr 2001
Balance of payments		
Export and import currencies	5422.0	Mar qtr 2003
International comparison of balance of payments statistics	5363.0	1999–2000
The Sydney Olympic Games	5302.0	Sep qtr 1999
Merchandise trade		
Changes to Country and Port Classifications	5368.0	Jun 2003
Export and import currencies	5422.0	Mar qtr 2003
Australia's exporters and importers, 2001–02	5422.0	Dec qtr 2002
Trade through Australia's ports	5422.0	Sep qtr 2002
Goods and selected services by region, 2000–2001	5368.0	Feb 2002
Australia's trade in wine	5422.0	Dec qtr 2001
Australia's export markets, 1991–92 to 2000–01	5422.0	Jun qtr 2001
Major commodities traded by Australia, 1991 to 2000	5422.0	Dec qtr 2000
Australia's trade in crude petroleum	5422.0	Mar qtr 2000
Australia's merchandise trade with Korea	5422.0	Sep qtr 1999
Australia's merchandise trade with Japan	5422.0	Mar qtr 1999
Bilateral merchandise trade statistics reconciliation: Australia and the European Union, 1992 to 1997	5422.0	Sep qtr 1998
Trade in services		
Goods and selected services by region, 2000–2001	5368.0	Feb 2002
International trade in education services	5302.0	Sep Qtr 2001
Technical information		
The effect of Customs changes on export statistics	5422.0	Jun qtr 2002
Harmonized system changes	5422.0	Sep Qtr 2001
International trade review: data quality and client queries	5422.0	Jun qtr 2000
Data confidentiality	5422.0	Dec qtr 1999
Change to value threshold for imports	5422.0	Jun qtr 1998

FOR MORE INFORMATION . . .

- INTERNET* **www.abs.gov.au** the ABS web site is the best place to start for access to summary data from our latest publications, information about the ABS, advice about upcoming releases, our catalogue, and Australia Now—a statistical profile.
- LIBRARY* A range of ABS publications is available from public and tertiary libraries Australia-wide. Contact your nearest library to determine whether it has the ABS statistics you require, or visit our web site for a list of libraries.
- CPI INFOLINE* For current and historical Consumer Price Index data, call 1902 981 074 (call cost 77c per minute).
- DIAL-A-STATISTIC* For the latest figures for National Accounts, Balance of Payments, Labour Force, Average Weekly Earnings, Estimated Resident Population and the Consumer Price Index call 1900 986 400 (call cost 77c per minute).

INFORMATION SERVICE

Data already published that can be provided within five minutes will be free of charge. Our information consultants can also help you to access the full range of ABS information—ABS user pays services can be tailored to your needs, time frame and budget. Publications may be purchased. Specialists are on hand to help you with analytical or methodological advice.

- PHONE* 1300 135 070
- EMAIL* client.services@abs.gov.au
- FAX* 1300 135 211
- POST* Client Services, ABS, GPO Box 796, Sydney NSW 2001

WHY NOT SUBSCRIBE?

ABS subscription services provide regular, convenient and prompt deliveries of ABS publications and products as they are released. Email delivery of monthly and quarterly publications is available.

- PHONE* 1300 366 323
- EMAIL* subscriptions@abs.gov.au
- FAX* 03 9615 7848
- POST* Subscription Services, ABS, GPO Box 2796Y, Melbourne Vic 3001



2536800005030

ISSN 1328 2778

RRP \$19.50